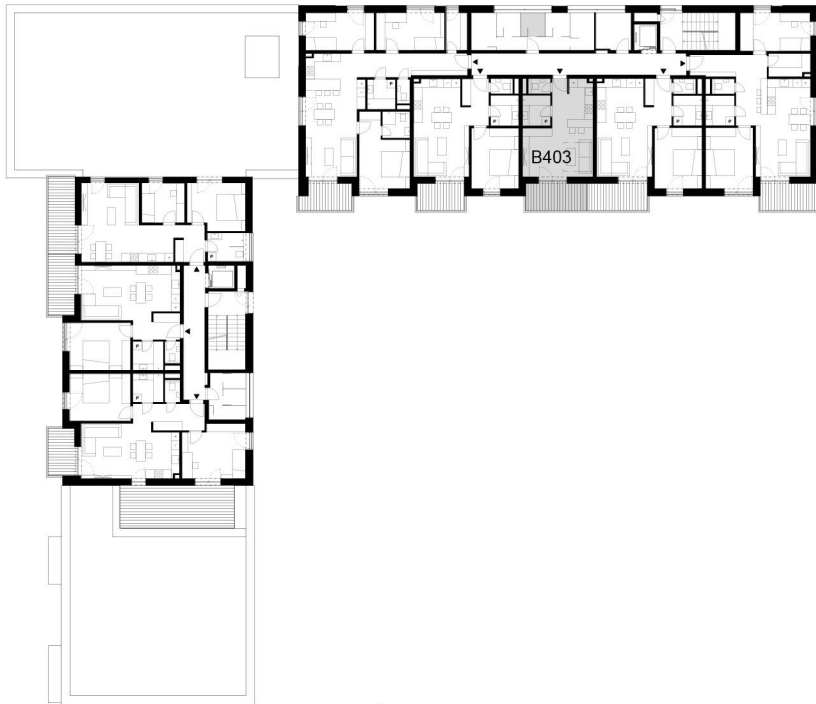
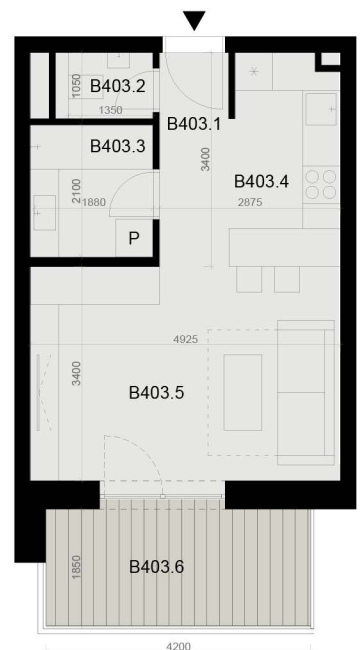




# DÚBRAVA



B403.1	VSTUPNÁ CHODBA	3,74 m <sup>2</sup>
B403.2	WC	1,63 m <sup>2</sup>
B403.3	KÚPELŇA	4,10 m <sup>2</sup>
B403.4	KUCHYŇA	5,81 m <sup>2</sup>
B403.5	DENNÁ ČASŤ	16,75 m <sup>2</sup>
B403.6	BALKÓN	7,77 m <sup>2</sup>
B403.7	KOBKA NA PODLAŽÍ	2,81 m <sup>2</sup>
<b>CELKOVÁ PLOCHA</b>		<b>42,61 m<sup>2</sup></b>



## DETAIL BYTU B 403

4. POSCHODIE

GARSÓNKA

32,03 m<sup>2</sup>

